

# Birdseye Quantify: Quantify Risk Your Way

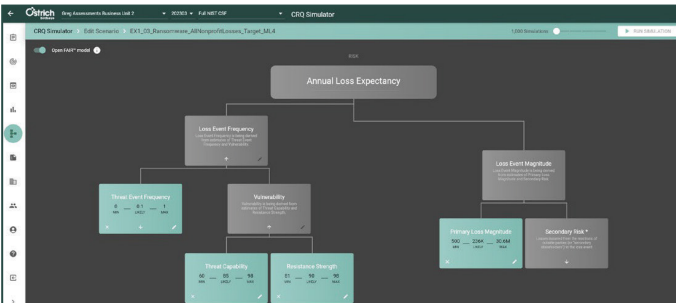
Leverage the full FAIR™ ontology with no usage restrictions to simulate risk scenarios.

A SaaS solution that gives you control to scope, build and simulate risk scenarios without limiting the way you can use the FAIR model or the complexity of the scenarios you build.

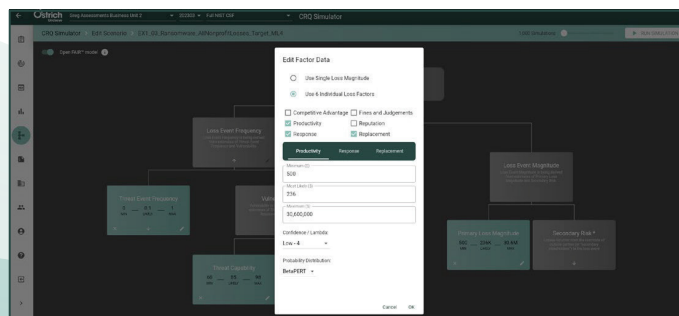
## What Makes Birdseye Quantify Different

- 1. Ease of Use:** Use the full FAIR™ ontology to create unlimited risk scenarios
- 2. Annual Loss Expectancy (ALE) Comparison:** Analyze scenario results to determine best ROI
- 3. Leverage Industry Data:** Take advantage of suggested Loss Event Frequency and Primary Loss Magnitude probabilities in your scenarios calculated by your industry's historic loss claims
- 4. Guided Threat Scenario Definition:** Build and customize scenarios using a guided threat scenario definition scoping wizard
- 5. Customer Success:** 1:1 customer meetings for onboarding, technical support and quarterly business and product updates
- 6. Get the Right Support:** Optional Professional Services are available to meet you where you are in your CRQ journey with introductory help in CRQ or expert advice for your CRQ program

## Birdseye CRQ Simulator

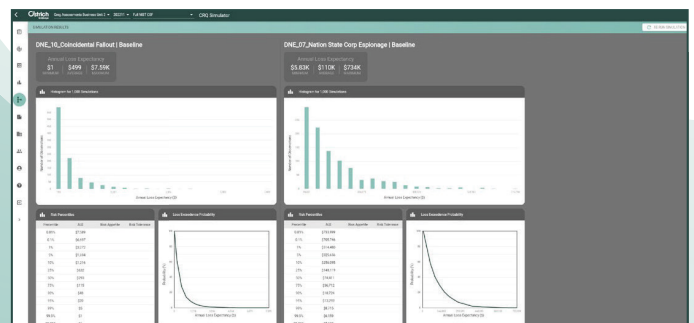


Select from suggested probabilities during risk scenario scoping



Select from a combination of 6 different options to represent Loss Event Magnitude

Several reporting views to analyze Annual Loss Expectancy (ALE)



# How Birdseye Quantify Works

Enhanced by Birdseye Analytics

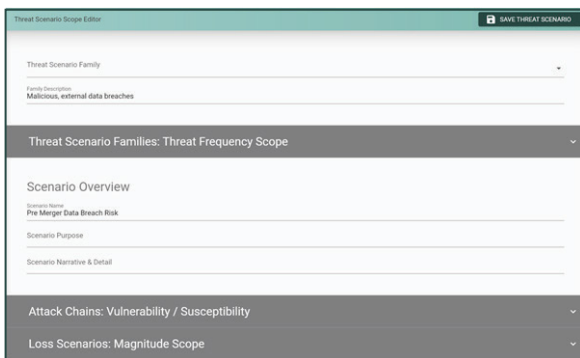
Compare your risk scenarios against industry benchmarks.

- Integration to Advisen™ curated historic loss claims data by industry
- Leverage suggested probability distributions for Loss Event Frequency and Magnitude
- Benchmark your risk scenario simulation results against your industry's Annual Loss Expectancy (ALE)

## Birdseye CRQ Context Manager

Save time building scenarios with a guided scenario definition and scoping wizard.

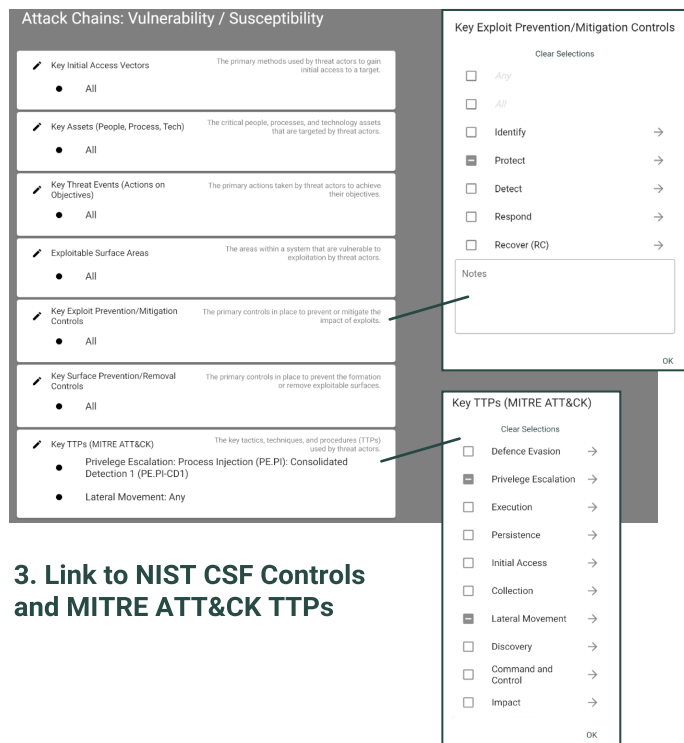
### 1. Risk Scenario Scoping Editor



#### Features:

- Out-of-the-box library of common risk scenario families that can be used to start your CRQ risk analysis.
- Build specific scenarios under a default scenario family, or create a new scenario family.

### 2. Scope Your Risk Analysis at the Level of Detail Required with Easy Drop Down Options



### 3. Link to NIST CSF Controls and MITRE ATT&CK TTPs

## CRQ Professional Services

Available for Birdseye customers who want help to build out their CRQ program, or further refine risk quantification by implementing CRQ best practices for better outcomes.



#### CISO/CIO/CRO

- CRQ Program Strategy
- Customized CRQ Program Framework
- Change Support



#### Risk Manager /Analyst

- Getting started with CRQ
- Common pitfalls
- Risk scenario scoping expert advice



To learn more about other Ostrich Cyber-Risk offerings, visit [www.ostrichcyber-risk.com](http://www.ostrichcyber-risk.com) or contact [info@ostrichcyber-risk.com](mailto:info@ostrichcyber-risk.com)